



ASSOCIATION OF
FOUNDATIONS

2019 Report

Representing 73% (145) of the Network Membership



over Php 13 billion

aggregate value of development initiatives



1. Php 5.9b
micro-finance
(5 members)



2. Php 2.1b
education
(106 members)



3. Php 1.3b
health and
nutrition
(82 members)



4. Php 663m
capacity building
(80 members)



5. Php 490m
livelihood
(53 members)



6. Php 444m
children's welfare
(41 members)



7. Php 326m
emergency
response
(34 members)



8. Php 202m
social services
(29 members)

top program areas based on expenditure



ASSOCIATION OF
FOUNDATIONS

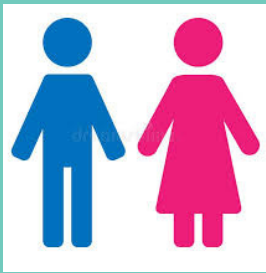
2019 Report

Representing 73% (145) of the Network Membership



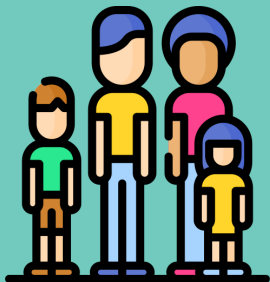
approx 29 m Filipinos

supported across the Philippines



16.5m
individuals

+

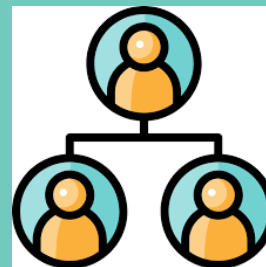


2.93m
families/
households



12,750
schools

+



10,000
organizations

+



960
local government
units

total beneficiaries



ASSOCIATION OF FOUNDATIONS

2019 Report

Representing 73% (145) of the Network Membership



in ALL regions

presence of AF network



AF members operating per region



**ASSOCIATION OF
FOUNDATIONS**

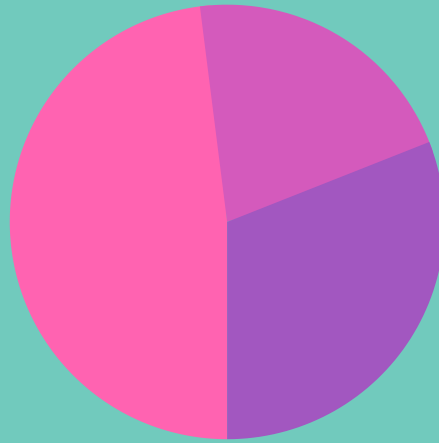
2019 Report

Representing 73% (145) of the Network Membership



69% collaborated

among the AF members



48%
collaborating
with >1

21%
collaborating with 1

31%
no existing
collaboration



12,885 human resource

full-time, part-time, project-based, and
volunteers of AF members

full-time
3,465 (50%)

part-time
93 (59%)

project-based
537 (49%)

volunteers
1,611 (34%)



full-time
3,441 (50%)

part-time
65 (41%)

project-based
564 (51%)

volunteers
3,109 (66%)